

KE-DBA-AUXW

ActivSense™ Intelligent Base Accessory - Deep Base (White)

General

The innovative Excellence range of intelligent addressable devices offers advanced features for reliability and peace of mind. Coupled with features for ease of installation and maintenance on new fire detection systems, it's a perfect match for exceptional overall performance.

The KE-DBA-AUXW is an Excellence series, surface mount base accessory. It allows cabling to be installed by running standard electrical conduit directly into the base, leaving no exposed cabling.

Preparation

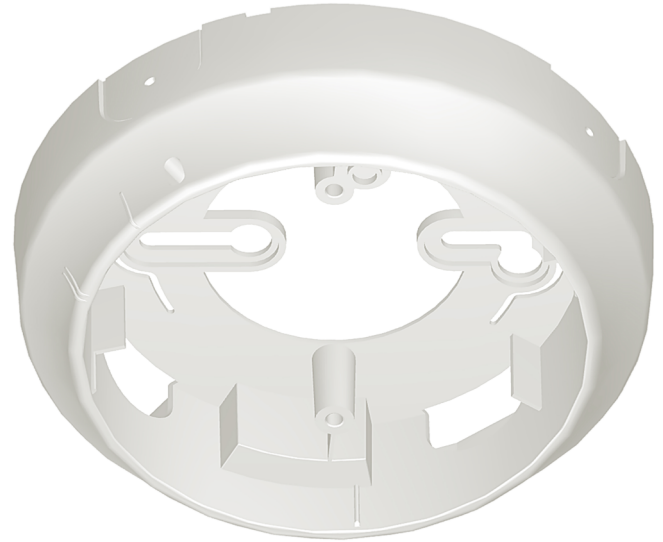
The standard rear cable entry into the base is available with the same wide opening dimensions as the standard base with ample room for cables. In addition, four entry points are provided on the wall of the fixture to accommodate side entry, spaced at 90° around the base to allow entry and exit in all directions.

Installation

The conduit entry points are conveniently supplied with breakouts and drill locations to facilitate either installation method.

Keyhole screw fixing locations adds to the ease of installation, with built-in flexibility features to allow for mounting on uneven surface without distorting of the base.

The standard Excellence series detector base fits snugly inside the fixture, completing the installation with the same feature set as for standard surface mount installation, including address tag mounting ability in two locations, head locking to avoid unauthorised detector removal, and device orientation features for quick, easy and secure detector placement.



Dettagli

- Large rear cable entry with ample space for cables
- Side conduit entry protects cables from damage
- Drill location and breakout support for conduit entry
- Support for uneven mounting surfaces with stress relief
- Installation fixture with first fix screw option reduces installation time and effort
- Dual address tag locations avoids alignment to make tags visible
- Supports standard Excellence series bases without feature loss, all base features remain usable
- Supports access to the selectable detector locking mechanism that protects against unauthorised detector removal

KE-DBA-AUXW

ActivSense™ Intelligent Base Accessory - Deep Base (White)

Specifiche tecniche

Generale

Compatibilità	Excellence series bases
---------------	-------------------------

Fisico

Dimensioni fisiche	130 x 48 mm (Ø x D)
Peso netto	165 g
Colore	Bianco (RAL 9016)
Tipo di montaggio	Montaggio a soffitto
Cavo di entrata	5 (1 off rear, 4 off 25 mm (Ø) Conduit)
Materiale (scatola)	ABS stampato

Ambientale

A prova di vandalo	No
Temperatura operativa	-30 to +85°C
Relative humidity	20 to 95% noncondensing
Ambiente	Interno

Regolatorio

Conformità	CE, REACH, RoHS 3, WEEE
Certificazioni	CE

Prodotti compatibili

Categoria	Riferimento	Descrizione
Dispositivo di rivelazione	KE-DB3010W	Base standard per rivelatori serie Excellence
Dispositivo di rivelazione	KE-DBA-TAGW	ActivSense™ Intelligent Universal Base Accessory - Address Tag (White)

