



DB806

Scatola ingresso conduit per la base del rivelatore

Optical Smoke Detector

Optical smoke detectors incorporate a pulsing LED located in a labyrinth within the housing of the detector. The labyrinth is designed to exclude light from any external source. At an angle to the LED is a photovoltaic cell which normally does not register the column of light emitted by the LED.

In the event of smoke from a fire entering the labyrinth the light pulse from the LED will be scattered and hence registered by the photocell. If the photocell «sees» smoke on two successive pulses, the detector changes to the alarm state and the LED lights up.

Standard Base

The base has been designed to enable detectors to be plugged in without any need for force - particularly useful when fitting to suspended ceilings. To make it even easier, the base has a «one way only» fit.

The detectors are polarity insensitive and bases are easy to wire with an earth connector.

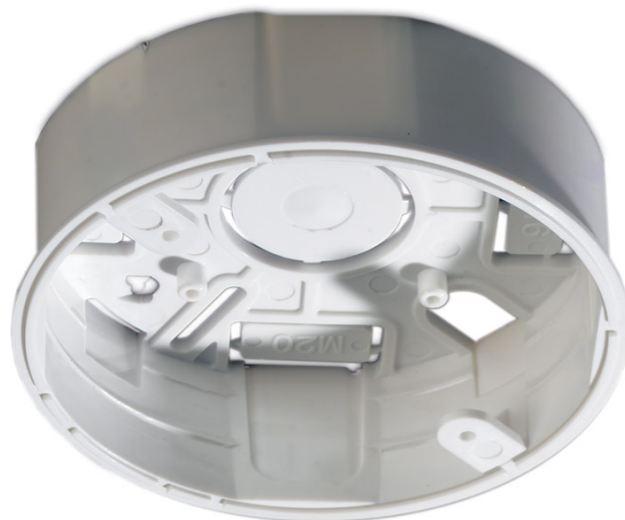
The base contains no electronic parts that could be damaged during installation. All bases are lockable.

Heat Detectors

The heat detectors are resettable and operate by using a matched pair of thermistors to sense heat. One thermistor is exposed to the ambient temperature, the other is sealed. In normal conditions, the two thermistors register similar temperatures, but, on the development of a fire, the temperature recorded by the exposed thermistor will increase rapidly, resulting in an imbalance of the thermistors and causing the detector to change to the alarm state.

Rate of rise detectors are designed to detect a fire as the temperature increases, but they also have fixed upper limit at which the detector will go into alarm if the rate of temperature increase has been too slow to trigger the detector earlier.

Fixed heat detectors only change to the alarm state at a preset temperature.



Caratteristiche standard

- DB806 permette di effettuare un'accurata installazione dei sensori puntiforme

DB806

Scatola ingresso conduit per la base del rivelatore

Come ordinare

Codice prodotto	Descrizione
DB806	Scatola ingresso conduit per la base del rivelatore

