

# NS3502-8P-2T-2S-V2

## 8-Port 10/100/1000Base-T + 2-Port 10/100/1000 + 2-Port 100/1000 SFP Managed Ethernet PoE+ Switch

### Overview

For fast and efficient connectivity from the network edge to a backbone switch or server, the IFS 10-port Gigabit Ethernet Managed Switch features eight 10/100/1000Mbps Gigabit Ethernet ports with 2 100/1000Mbps SFP ports. The 2 SFP ports can support either 100Base-X or 1000Base-X through an SFP interface.

For efficient switch management, the Switch is easily programmable via a simple, yet powerful Web Interface. The switch can manage Port Speed Configuration, Port Link Aggregation, IEEE 802.1Q VLAN and Q-in-Q VLAN, Port Mirroring, Spanning Tree and ACL security. The switch includes advanced features such as Multicasting with IGMP snooping and query, QoS, broadcast storm and bandwidth control to enhance bandwidth utilization.



### Engineered for Real-time Performance

This switch is designed with a high performance non-blocking switch fabric and provides wire-speed throughput to ensure optimum quality of service. The Switch classifies and prioritizes Layer 2 802.1p or Layer 3 IP TOS/DSCP traffic into four hardware queues that support strict or Weighted Round Robin (WRR) queuing algorithms. This functionality provides maximum allocation of limited network resources and guarantees best performance for real-time applications.

### Full Power, Isolated per Port PoE

This Gigabit PoE Managed Switch provides optimized deployment and safe power management to PoE edge devices such as IP Surveillance cameras or access control panels. Full power PoE-af (15.4w) is provided to all 8-ports with no power sharing, and added port circuit protection isolates and prevents power interference between ports. In addition to standard IEEE 802.3af (15.4w), the IFS Gigabit PoE Managed Switch provides support for up to 7 ports of IEEE 802.3at (30w) PoE+.

### Built-in Monitoring, Diagnostics and Troubleshooting Tools

The Switch can be configured to monitor a connected PD (Powered Device) status in real-time via IP ping. If a PD (IP Camera or IP Access Reader) no longer responds to a ping, the switch will cycle PoE power on the port thus rebooting the PD back to operational status. This along with built-in cable diagnostics, and support for SNMP can greatly enhance the IT administrator's trouble-shooting and management abilities, saving time and labor while keeping network downtime to a minimum.

### Details

- 10-Port 10/100/1000Base-T RJ-45 with 8-ports IEEE 802.3af / 802.3at PoE Injector
- 2-Port 100/1000Base-X mini-GBIC/SFP slots, SFP type auto detection
- 1x console interface for basic management and setup
- Web-based, telnet, SSH, SSL and console command line management, IP address security management to prevent unauthorized intruder
- RADIUS / TACACS+ users access authentication
- Complies with IEEE 802.3, IEEE 802.3u, IEEE 802.3ab, IEEE 802.3z, IEEE 802.3af, IEEE 802.3at standards
- Supports auto-negotiation and half-duplex/full-duplex modes for all 10Base-T/100Base-TX and 1000Base-T
- Prevents packet loss with back pressure (half-duplex) and IEEE 802.3x pause-frame flow control (full-duplex) groups, out of 4K VLAN IDs
- IP-Based Access Control List (ACL), MAC-Based Access Control List, Source MAC / IP address binding
- Ingress/egress bandwidth control on each port
- Supports IGMP Snooping v1, v2 and v3, IGMP query mode for multicast media application and Multicast VLAN Registration
- Internal power supply
- Port mirroring to monitor the incoming or outgoing traffic on a particular port
- Supports LLDP to allow switch to advise its identification and capability on the LAN
- IPv4 and IPv6 IP Address / NTP / DNS management

# NS3502-8P-2T-2S-V2

## 8-Port 10/100/1000Base-T + 2-Port 10/100/1000 + 2-Port 100/1000 SFP Managed Ethernet PoE+ Switch

### Technical specifications

#### Generale

Fast ring	No
Storm control	Broadcast, Multicast
Sicurezza	802.1x, ACL, IP-MAC port binding, RADIUS, Source MAC / IP address binding, TACACS+
DHCP snooping	Si
Uscita guasto relè	No

#### Categoria

Categoria	Commerciale
Gestione	Managed
Managed	Si (Layer 3 - Limited)
PoE	Si

#### Porte fisiche

No. di porte	10
Tipo porta	Gig
Velocità	Gigabit
PoE/PoE+	8 port PoE/8 port PoE+
Porta fibra	2
Supporto SFPs	S20/S25 series, S30/S35 series
Velocità SFP	100/1000

#### Caratteristiche Switch

Cambia tessuto	24 Gbps
Throughput (Mpps)	17.76
Mac table	8 K
Jumbo frame support	9 K

#### Funzioni di livello 2

Management interface	Console, Web, Telnet, SNMP 1,2,3, SSH/SSL secure access
IGMP snooping	255 Group, Snooping v1, v2, v3
IGMP query	Si
VLAN, QoS	256, yes
Lista controllo accessi	123 entries

#### Elettrico

PoE power budget	200 W
Alimentazione ridondante	No
Tipo di alimentatore	da 100 a 240 VAC
Consumo di energia	320 W (Max)

#### Fisico

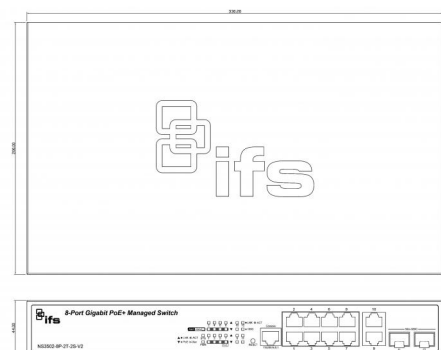
Dimensioni fisiche	330 x 200 x 44 mm (1U height)
Peso netto	2 kg
Colore	Nero
Materiale	Metallo
Tipo di montaggio	Desk-based
Stackable	No

#### Ambientale

Temperatura operativa	0 to +50°C
Temperatura di immagazzinamento	-20 to +70°C
Ambiente	Interno

#### Standards Compliance

IEEE 802.3 10Base-T
IEEE 802.3u 100Base-TX/100Base-FX
IEEE 802.3z Gigabit SX/LX
IEEE 802.3ab Gigabit 1000Base-T
IEEE 802.3ad Port trunk with LACP
IEEE 802.3af Power over Ethernet
IEEE 802.3at Power over Ethernet
IEEE 802.3x Flow Control and Back Pressure
IEEE 802.1d Spanning Tree Protocol
IEEE 802.1w Rapid Spanning Tree Protocol
IEEE 802.1s Multiple Spanning Tree Protocol
IEEE 802.1p Class of Service
IEEE 802.1Q VLAN Tagging
IEEE 802.1x Port Authentication Network Control
RFC 768 UDP, RFC 791 IP, RFC 792 ICMP
RFC 793 TFTP, RFC 2068 HTTP
RFC 1112 IGMP Version 1, RFC 2236 IGMP Version 2



As a company of innovation, UTC Fire & Security reserves the right to change product specifications without notice. For the latest product specifications, visit UTC Fire & Security online or contact your sales representative.

Last updated on 22 May 2020 - 13:14

